



BICENTENNIAL BULLETIN No. 17 ***—Sheffield Celebrates 200th Birthday***

The Sheffield Bicentennial Commission will issue a *Bicentennial Bulletin* each Monday throughout 2015 that illustrates the rich heritage of our communities. ***View them at — www.sheffieldbicentennial.org or sheffieldvillage.com***

VILLAGE OF SHEFFIELD MUNICIPAL COMPLEX

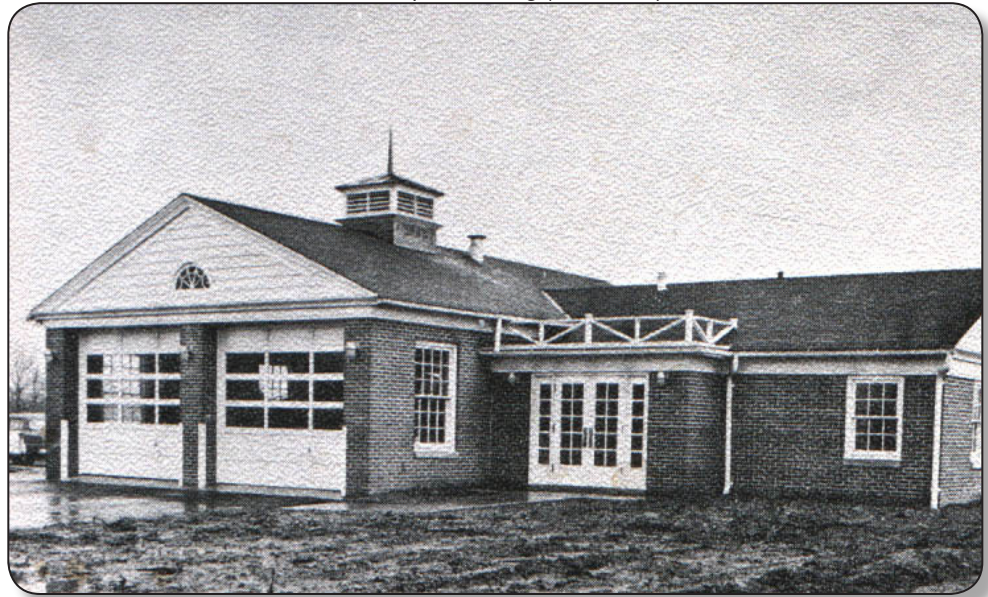
(built 1957; expanded 1999—administrative and safety center)

4820 Colorado Avenue, Sheffield Village, Ohio

*T*he Village of Sheffield took a major step forward on April 28, 1957 by dedicating a new municipal building and fire/police station on the southeast corner of Colorado Avenue and East River Road. From 1934 until then, the safety departments had operated out of the old Village Hall, a converted one-room schoolhouse built in 1883 on Detroit Road. The new building was designed

by architect Arnold Peterson and constructed by Joseph Finochi & Son at a cost of \$42,700. The construction was financed from the General Fund of the Village with no additional tax assessment. The Village also purchased a Howe Fire Truck for \$11,337 at the same time, again paid for from the General Fund with no special tax assessment. In addition to offices and garages for the fire and police departments, the building contained an office for a water department in anticipation of a water distribution system being planned for the Village.

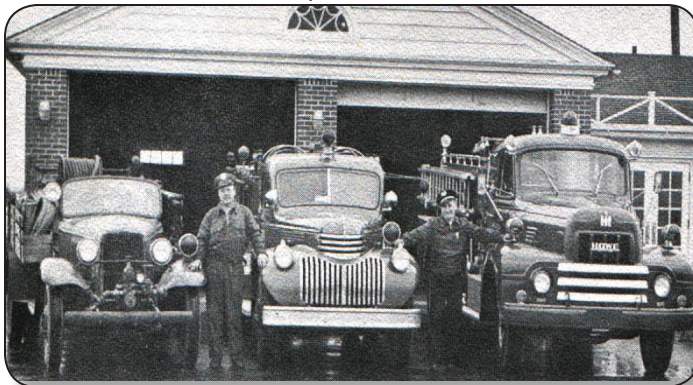
Municipal Building (built 1957)



Fire Department in 1957



Police Department in 1957



By the 1990s the Village administration and safety services had outgrown both the Village Hall on Detroit Road and the municipal building on Colorado Avenue. The Village Council decided to expand the Colorado Avenue facility to include other administrative offices as well as enlarged spaces for the fire and police departments. Designed by RWL Architects & Engineers, Inc., the new Sheffield Village Municipal Complex was completed in 1999 at a cost of \$2,000,000. The complex currently houses several departments of the Village government. The east wing of the structure consists of a spacious chamber for the Village Council that can seat over 100 people, as well as a conference room. The Mayor's Court is also conducted in the council chambers. The west wing holds the fire and police departments. The Mayor's Office is located at the center of the complex.



Sheffield Village Municipal Complex (completed 1999)



Fire station and new ladder fire truck (2008)



Other municipal buildings include the Sheffield Village Hall at 4820 Detroit Road, which houses offices for the clerk/treasurer and Garfield Cemetery. The Village park, street, and water departments (collectively known as the service department) are located in a facility at 4480 Colorado Avenue. This metal building was constructed 1965 by the Milan Steel Construction Company at a cost of \$14,300. The Village also operates James Day Park in the valley of French Creek, located to the south and east of the Municipal Complex.

Commemorative Bicentennial Bell on new fire truck (2015)



New pumper fire truck (2015)



Police Station

