



BICENTENNIAL BULLETIN No. 10 ***—Sheffield Celebrates 200th Birthday***

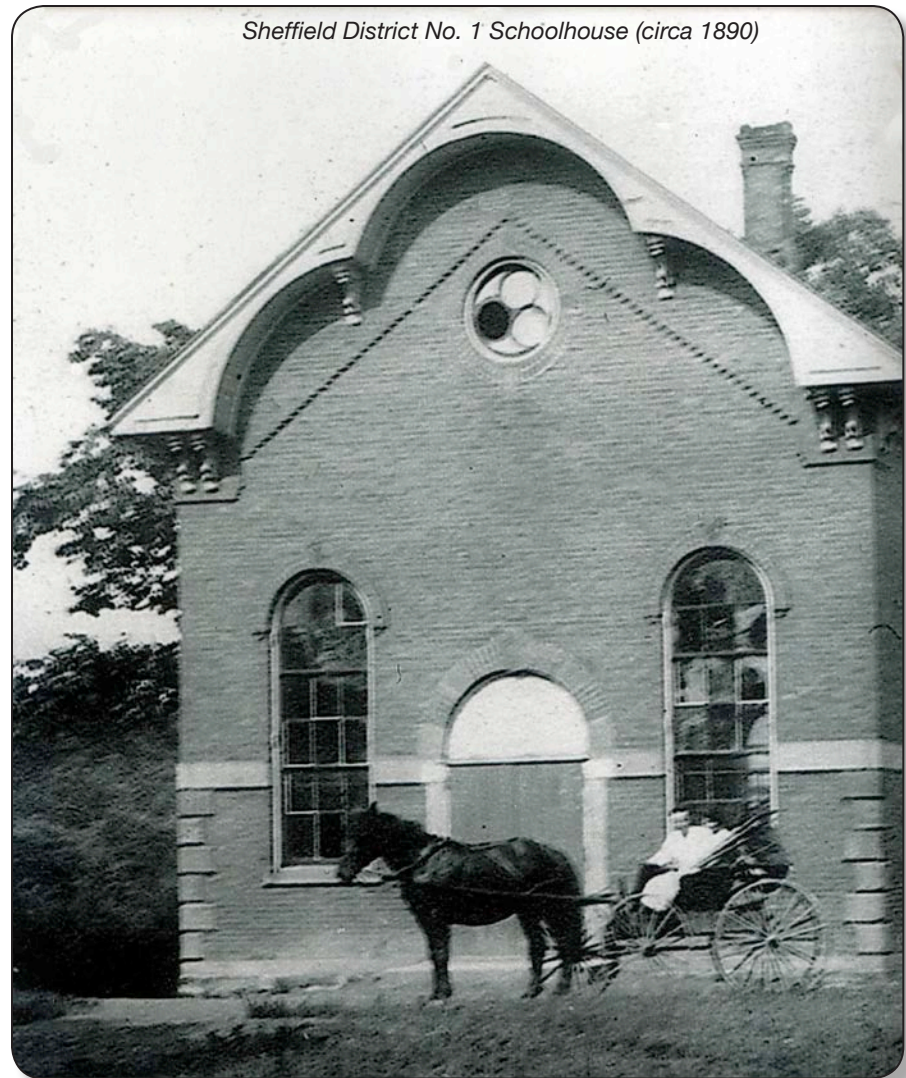
The Sheffield Bicentennial Commission will issue a *Bicentennial Bulletin* each Monday throughout 2015 that illustrates the rich heritage of our communities. **View them at — www.sheffieldbicentennial.org or sheffieldvillage.com**

SHEFFIELD DISTRICT NO. 1 SCHOOLHOUSE ***(built 1880—replaced a 1817 log school)*** ***East River Road, Sheffield Village, Ohio***

The first schoolhouse in Sheffield Township was a small log building at the crest of the south bluff of French Creek valley. Built in 1817, it served as both a church and school. Dr. Preston Pond, who came from Keene, New Hampshire, taught the first classes held there in 1817-1818. The next winter Daniel T. Baldwin was the school's instructor. The log schoolhouse was replaced in 1880 with a red brick schoolhouse—the sandstone foundation and basement walls of which can still be seen on East River Road across from the Burrell Homestead. Upstairs were grades 1 through 8 and the basement served as headquarters for the Board of Education.

Other early teachers at the District No. 1 School included Mary [Steele] Day, wife of William Augustus Day. Mary's homestead was just south of the District No. 1 Schoolhouse where she taught for several decades in the late 1870s to early 1900s. Her daughter, Maude Day (born 1862), taught at the same school in the 1880s.

Another one-room school building was located on North Ridge in the 1870s according to an 1874 map of Sheffield Township. This presumably wood frame structure was replaced in 1883 with the red brick building that now serves as the Sheffield Village Hall, housing the Village Treasurer's office and



Sheffield District No. 1 Schoolhouse (circa 1890)

the office for Garfield Cemetery at 4820 Detroit Road. In the latter part of the nineteenth century, eight red brick schoolhouses were located in Sheffield Township—the two mentioned above plus another on Abbe Road in the Village, two along the lakeshore in Sheffield Lake, two west of the Black River in the Township, and one at Randall’s Grove in present day Lorain. In 1878, when the population of the Township was nearing 1,000, the eight schoolhouses were attended by 286 students and were collectively valued at \$7,000. In the spring of 1895, the Sheffield Township schools held graduating exercises in the Sheffield Congregational Church with all eight schools represented. Mary Day, 18-year veteran of teaching in Sheffield schools, presided at the exercises.

Teacher Mary [Steele] Day and her students at District No. 1 School (1893)



Teacher Maude Day with her students (circa 1880s)



In 1920, while the residents east of the Black River withdrew from Sheffield Township government forming Sheffield Lake Village, the schools remained under the jurisdiction of a single school board. In 1921 the voters supported a bond issue for \$180,000 to centralize education by building three new schools to replace the old ones. By 1923, Brookside, Vincent, and Highland (later Clearview) Schools were opened for the lower grades (1 through 8) and students were transported by buses.

The Sheffield District No. 1 Schoolhouse on French Creek was located a few hundred feet north of the Congregational Church that was built in 1852. The school was demolished in the 1930s after sitting idle once Brookside School was opened in 1923. The sandstone block walls of the basement and the school well are visible from the trail on the east side of East River Road leading from James Day Park to the Burrell Homestead. The remains of the school are now within the French Creek Reservation of Lorain County Metro Parks.

Sandstone foundation of District No. 1 School (2012)

