

**SuperFlash**<sup>®</sup>  
COMPRESSED GAS EQUIPMENT

**POINTS**

**FREE!**

MINI

**SAFETY POSTER**

[PAGE 12]

**INSIDE**

**NEW!**

**OxyDetect Analyzers:**

**NEVER** Replace the Sensor!

SEE PAGE 24



**IBEDA**<sup>®</sup>  
INC.  
CERTIFIED SAFETY  
*Worldwide!*

## Torch and Regulator Standard Flashback Arrestors

SuperFlash flashback arrestors are UL and BAM approved, 100% tested for reverse flow, leak integrity and flashback protection with actual flashbacks, and contain a built-in 100 micron inlet filter, reverse flow check valve, 3-5 micron flame barrier, and a thermal shutoff valve in our point of supply models. So you can be sure that not only are you getting enough gas flow, you are getting the highest quality safety device available.

SuperFlash flashback arrestors are the worldwide leader in quality and functionality.

## Standard Flow: Regulator

Model DGN installs easily on the outlet fitting of most regulators and gas supply points. They help meet ANSI Z49.1 2012, OSHA, NFPA safety requirements and protect against the most common causes of accidents such as reverse gas flow, flashback, and hose burn back. Each flashback arrestor is 100% tested with actual flashbacks and have built in 100 micron inlet filters, reverse flow check valves, flame barriers, and thermal shut off valves. Model DGND includes all the features of the DGN with the addition of a pressure relief valve that vents excess pressure to the atmosphere.



TYPE OF GAS	CONNECTION		PART NO.
	INLET	OUTLET	
<b>Fuel Gas (LH)</b>	9/16" UNF <sup>1</sup> F	9/16" UNF <sup>1</sup> M	0701-4123
	1/4" NPT F	1/4" NPT F	EDI-0004
	RR 41/64" <sup>2</sup> F	RR 41/64" <sup>2</sup> M	0701-0299
<b>Hydrogen (LH)</b>	1/4" NPT F	1/4" NPT F	0701-4350*
	9/16" UNF <sup>1</sup> F	9/16" UNF <sup>1</sup> M	0701-4128
	1/4" NPT F	1/4" NPT F	EDI-0001
<b>Oxygen (RH)</b>	9/16" UNF <sup>1</sup> F	9/16" UNF <sup>1</sup> M	0701-4128
	1/4" NPT F	1/4" NPT F	EDI-0001
	RR 41/64" <sup>2</sup> F	RR 41/64" <sup>2</sup> M	0701-0312

### BLISTER PACK SET:

TYPE OF GAS	CONNECTION		PART NO.
	INLET	OUTLET	
<b>1 Fuel (LH) 1 Oxygen (RH)</b>	9/16" UNF <sup>1</sup> F	9/16" UNF <sup>1</sup> M	616226-04099

### QUICK TIPS

#### DO ALL FLAME BARRIERS PROVIDE THE SAME LEVEL OF PROTECTION?

No, all flame barriers are not created equal. Flame barriers can be made of different materials and have different micron openings. The flame barrier needs to be made a material that will extinguish fires and have the right size openings to allow gas through—but not a flashback. If the micron openings are too large or the material is not correct—the flame barrier will not stop a flashback. SuperFlash flashback arrestors are made of high quality 3-5 micron stainless steel, and are 100% tested so they stop flashbacks every time.

# Standard Flow: Torch

Torch and Point-of-Use flashback arrestors are combination reverse flow check valve and flame barrier in one body. They provide protection against flashback and reverse flow of gases to the operator at the torch or Point-of-Use. Safety regulations and guidelines in many countries around the world require the use of flashback arrestors.



CONNECTION

TYPE OF GAS	INLET	OUTLET	PART NO.
<b>Fuel Gas (LH)</b>	9/16" UNF <sup>1</sup> M	9/16" UNF <sup>1</sup> F	0701-2064
	RR 41/64" <sup>2</sup> F	RR 41/64" <sup>2</sup> M	0701-3045
<b>Oxygen (RH)</b>	9/16" UNF <sup>1</sup> M	9/16" UNF <sup>1</sup> F	0701-2070
	RR 41/64" <sup>2</sup> F	RR 41/64" <sup>2</sup> M	0701-3044

GG AIRFLOW:

Inlet Pressure PSIG**	Airflow FT <sup>3</sup> / H
<b>7.3</b>	100.0
<b>14.5</b>	197.0
<b>21.8</b>	309.0
<b>36.3</b>	521.0
<b>72.7</b>	929.0

BLISTER PACK SET:

CONNECTION

TYPE OF GAS	INLET	OUTLET	PART NO.
<b>1 Fuel (LH) 1 Oxygen (RH)</b>	9/16" UNF <sup>1</sup> M	9/16" UNF <sup>1</sup> F	616226-02070

\*\* PSIG = pounds per square inch gauge  
F = Female Connection  
M = Male Connection

<sup>1</sup> CGA Class "B" Connection  
<sup>2</sup> CGA Connection used by Railroads



- ✓ 100% Flashback Testing ensures our products work in real world situations.
- ✓ 3-5 micron stainless steel flame barriers stop flashbacks. Other brands have larger microns and less effective materials, that might not stop flashbacks every time.
- ✓ 100 micron inlet filter keeps contaminants out and increases service life by as much as 2.5 times.

## "A" Size Flashback Arrestors

SuperFlash offers flashback arrestors with CGA "A" size connections (3/8"-24UNF) for use with HVAC torches and regulators, jewelry, aircraft torches and regulators, or any application using equipment with CGA "A" size connections. These flashback arrestors still offer all the benefits of our standard flashback arrestors, just with a size convenient for your smaller torches and regulators. All SuperFlash flashback arrestors are 100% tested in our facilities for flashback protection, reverse flow protection and against leaks.



MINI DG

MINI GG



### CONNECTION

TYPE OF GAS	MODEL	INLET	OUTLET	PART NO.
Fuel Gas (LH)	Mini-GG (A size torch)	3/8" UNF <sup>2</sup> M	3/8" UNF <sup>2</sup> F	0701-3200
Oxygen (RH)	Mini-GG (A size torch)	3/8" UNF <sup>2</sup> M	3/8" UNF <sup>2</sup> F	0701-3201
Fuel Gas (LH)	Mini-DG (A size regulator)	3/8" UNF <sup>2</sup> F	3/8" UNF <sup>2</sup> M	0701-3210
Oxygen (RH)	Mini-DG (A size regulator)	3/8" UNF <sup>2</sup> F	3/8" UNF <sup>2</sup> M	0701-3211

## "A" Size Check Valves

With the small size and light weight the CGA "A" size check valve is especially designed for miniature soldering and welding equipment. Typical uses are refrigeration, jewelry, and other small repairs requiring small torches with CGA "A" connections. Low check valve cracking pressure of 1 PSIG (65-70 mbar).



CHECK VALVES

### CONNECTION

TYPE OF GAS	MODEL	INLET	OUTLET	PART NO.
Fuel Gas (LH)	Check Valve (A size torch)	3/8" UNF <sup>2</sup> M	3/8" UNF <sup>2</sup> F	0701-3220
Oxygen (RH)	Check Valve (A size torch)	3/8" UNF <sup>2</sup> M	3/8" UNF <sup>2</sup> F	0701-3221

F = Female Connection    M = Male Connection    <sup>2</sup> CGA Class "A" Connection



# Resettable Flashback Arrestors



DS-1000

Top of the line models DS-1000 and DS-2000 flashback arrestors easily mount on most regulators or supply points and have a resettable pressure control valve that cuts off gas supply in the event of flashback or reverse gas flow. Resetting is easy — just pull up on the pressure control knob — no disassembly or special tools are required. The DS-2000 features high gas flow capacity, built in 100 micron inlet screen, reverse flow check valve, flame barrier and thermal shut off.

**DS-1000:**

CONNECTION

TYPE OF GAS	INLET	OUTLET	PART NO.
<b>Fuel Gas (LH)</b>	9/16" UNF <sup>1</sup> F	9/16" UNF <sup>1</sup> M	0701-3600
<b>Oxygen (RH)</b>	9/16" UNF <sup>1</sup> F	9/16" UNF <sup>1</sup> M	0701-3601



DS-2000

**DS-2000:**

CONNECTION

TYPE OF GAS	INLET	OUTLET	PART NO.
<b>Fuel Gas (LH)</b>	9/16" UNF <sup>1</sup> F	9/16" UNF <sup>1</sup> M	0701-3905
<b>Oxygen (RH)</b>	9/16" UNF <sup>1</sup> F	9/16" UNF <sup>1</sup> M	0701-3907

**DS-1000 AIRFLOW**

Inlet Pressure PSIG**	Airflow FT <sup>3</sup> / H
<b>7.3</b>	126.0
<b>14.5</b>	223.0
<b>21.8</b>	311.0
<b>36.3</b>	491.0
<b>72.7</b>	1004.0

**DS-2000 AIRFLOW**

Inlet Pressure PSIG**	Airflow FT <sup>3</sup> / H
<b>7.3</b>	231.0
<b>14.5</b>	465.0
<b>21.8</b>	725.0
<b>36.3</b>	1041.0
<b>72.7</b>	1933.0

\*\* PSIG = pounds per square inch gauge  
 F = Female Connection  
 M = Male Connection  
<sup>1</sup> CGA Class "B" Connection

## HOW SAFE ARE YOUR FLASHBACK ARRESTORS?

A quality flashback arrestor should have a stainless steel flame barrier and low porosity. (The flame barrier is the part of a flashback arrestor that actually stops the flashback.) Low cost or discount flashback arrestors often use a barrier made of bronze and with a porosity that can be as high as 20-40 microns. This allows the manufacturer to save money, but can possibly put the user in danger, because bronze is an alloy containing a large portion of copper.

SuperFlash flashback arrestors use a flame barrier with a porosity of 3-5 microns, which enables the arrestor to safely stop flashbacks.

**QUICK TIPS**



## High Flow Torch and Regulator Mount Flashback Arrestors

Due to the recent increase in popularity of alternate fuel gases for oxyfuel welding, cutting and brazing, some gas users may need to re-evaluate their gas flow requirements. Brazing or cutting with some alternate fuel gases, such as propane, can require a much higher oxygen flow than a similar operation done with acetylene. It is important to make sure you are always getting enough gas flow to maintain your productivity, efficiency, and safety.

SuperFlash Compressed Gas Equipment offers High Flow Flashback Arrestors for use on both the torch side and the regulator side. These arrestors can give users flow rates that are twice as much as a standard flashback arrestor. This will help users avoid choking out tips or equipment, which can lead to serious problems.

## High Flow: Regulator

Ideal for size 4 tip or larger!

TYPE OF GAS	CONNECTION		PART NO.
	INLET	OUTLET	
Fuel Gas (LH)	9/16" UNF <sup>1</sup> F	9/16" UNF <sup>1</sup> M	0701-1123
	RR 41/64" <sup>2</sup> F	RR 41/64" <sup>2</sup> M	0701-1118
	7/8" UNF <sup>3</sup> F	7/8" UNF <sup>3</sup> M	0701-3057
Hydrogen (LH)	9/16" UNF <sup>1</sup> F	9/16" UNF <sup>1</sup> M	0701-3093*
Oxygen (RH)	9/16" UNF <sup>1</sup> F	9/16" UNF <sup>1</sup> M	0701-1129
	RR 41/64" <sup>2</sup> F	RR 41/64" <sup>2</sup> M	0701-1119
	7/8" UNF <sup>3</sup> F	7/8" UNF <sup>3</sup> M	0701-3058



## High Flow: Torch

Ideal for size 4 tip or larger!

TYPE OF GAS	CONNECTION		PART NO.
	INLET	OUTLET	
Fuel Gas (LH)	9/16" UNF <sup>1</sup> M	9/16" UNF <sup>1</sup> F	0701-3021
	7/8" UNF <sup>3</sup> M	7/8" UNF <sup>3</sup> F	0701-3054
Oxygen (RH)	9/16" UNF <sup>1</sup> M	9/16" UNF <sup>1</sup> F	0701-3022
	7/8" UNF <sup>3</sup> M	7/8" UNF <sup>3</sup> F	0701-3055



\* Model DG91NH Hydrogen 143 PSIG

F = Female Connection

M = Male Connection

<sup>1</sup> CGA Class "B" Connection

<sup>2</sup> CGA Connection used by Railroads

<sup>3</sup> CGA Class "C" Connection

### QUICK TIPS

#### WON'T A CHECK VALVE STOP A FLASHBACK?

Check valves only prevent the reverse flow of gases and **CANNOT** stop a flashback. Check valves do not have the essential element to stop a flashback—a flame barrier. A flame barrier stops the rapid flame propagation through hoses, regulators and torches. Without this protection, the check valve cannot stop a flashback.

## Quick Connectors with Flashback Arrestors

Quick connector with flashback arrestor models DKSG/D1 (for torches) and the DGNDK/D4 (for regulators) make set up and take down of equipment easy. They use durable stainless steel coupling pins to resist abrasion and provide years of service. Each model's inlet filter, reverse flow check valve, flame barrier, (and the regulator model's thermal shut off) help meet safety guidelines such as ANSI Z49.1:2012 and OSHA requirements.

## For Torch and Point of Use

### MODEL DKSG / D1:

CONNECTION

TYPE OF GAS	INLET	OUTLET	PART NO.
<b>Fuel Gas (LH)</b>	9/16" UNF <sup>1</sup> M	9/16" UNF <sup>1</sup> F	0701-4033
<b>Oxygen (RH)</b>	9/16" UNF <sup>1</sup> M	9/16" UNF <sup>1</sup> F	0701-4038

### BLISTER PACK SET:

CONNECTION

TYPE OF GAS	INLET	OUTLET	PART NO.
<b>1 Fuel (LH) 1 Oxygen (RH)</b>	9/16" UNF <sup>1</sup> M	9/16" UNF <sup>1</sup> F	616226-05012



DKSG / D1

## For Regulators and Point of Use

### MODEL DGNDK / D4:

CONNECTION

TYPE OF GAS	INLET	OUTLET	PART NO.
<b>Fuel Gas (LH)</b>	9/16" UNF <sup>1</sup> F	9/16" UNF <sup>1</sup> M	0701-4022
<b>Oxygen (RH)</b>	9/16" UNF <sup>1</sup> F	9/16" UNF <sup>1</sup> M	0701-4027

### BLISTER PACK SET:

CONNECTION

TYPE OF GAS	INLET	OUTLET	PART NO.
<b>1 Fuel (LH) 1 Oxygen (RH)</b>	9/16" UNF <sup>1</sup> F	9/16" UNF <sup>1</sup> M	616226-05013



DKSG / D4

## For Hose-To-Hose Connection

### MODEL DKSG / D4:

CONNECTION

TYPE OF GAS	INLET	OUTLET	PART NO.
<b>Fuel Gas (LH)</b>	9/16" UNF <sup>1</sup> M	9/16" UNF <sup>1</sup> M	0701-4044
<b>Oxygen (RH)</b>	9/16" UNF <sup>1</sup> M	9/16" UNF <sup>1</sup> M	0701-4049

\*\* PSIG = pounds per square inch gauge

F = Female Connection

M = Male Connection

<sup>1</sup> CGA Class "B" Connection

## SIMAX and DEMAX Series of Flashback Arrestors

The SIMAX and DEMAX series of flashback arrestors provides a full range of dry (no water or fluid to check or replenish) flashback, gas reverse flow and hose burn back protection in a compact, economical package. They are approved safety devices under ANSI Z49.1:2012 safety guidelines and help meet OSHA, NFPA and other strict industry safety standards. They are ideal for high volume gas flow applications in pipelines and manifolds.

### SIMAX Series

The SIMAX series of flashback arrestors provides a full range of dry type (no water or fluid to check or replenish) flashback, gas reverse flow, and hose burn back protection in a compact economical package. SIMAX series flashback arrestors are approved safety devices under ANSI Z49.1:2012 safety guidelines and help meet OSHA, NFPA, and other strict industry safety standards. They are ideal for high volume gas flow applications in pipelines and manifolds.

TYPE OF GAS	MODEL	CONNECTION		PART NO.
		INLET	OUTLET	
Fuel Gas	SIMAX 3	1" NPT F	1" NPT F	0701-3270
	SIMAX 5	1" NPT F	1" NPT F	0701-3271
	SIMAX 8	1" NPT F	1" NPT F	0701-3279
Oxygen	SIMAX 3	1" NPT F	1" NPT F	0701-3191
	SIMAX 5	1" NPT F	1" NPT F	0701-3192
	SIMAX 8	1" NPT F	1" NPT F	0701-3197



SIMAX 5

### DEMAX Series

The DEMAX is designed for high gas volume pipelines and tapping points to help meet ANSI Z49.1 2012 safety guidelines, OSHA, NFPA and other strict industry standards. It can be used in manifold systems and pipelines. It includes an inlet filter, reverse flow check valve, flame barrier, and thermal shut off in one compact brass body. One (1") NPT female inlet and outlet makes installation easy.

TYPE OF GAS	CONNECTION		PART NO.
	INLET	OUTLET	
Fuel Gas (LH)	7/8" UNF <sup>3</sup> F	7/8" UNF <sup>3</sup> M	0701-3302
Fuel Gas	1" NPT F	1" NPT F	0701-3304
Oxygen (RH)	7/8" UNF <sup>3</sup> F	7/8" UNF <sup>3</sup> M	0701-3300
Oxygen	1" NPT F	1" NPT F	0701-3307

<sup>3</sup> CGA Class "C" Connection



DEMAX





DEMAX	SIMAX 3	SIMAX 5	SIMAX 8
<b>For Fuel Gas</b> Up to <b>2,600 ft<sup>3</sup>/hr</b> airflow at 50 psig.	<b>For Fuel Gas</b> Up to <b>3,600 ft<sup>3</sup>/hr</b> airflow at 50 psig.	<b>For Fuel Gas</b> Up to <b>5,900 ft<sup>3</sup>/hr</b> airflow at 50 psig.	<b>For Fuel Gas</b> Up to <b>9,500 ft<sup>3</sup>/hr</b> airflow at 50 psig.
<b>For Oxygen</b> Up to <b>7,600 ft<sup>3</sup>/hr</b> oxygen flow at 143 psig.	<b>For Oxygen</b> Up to <b>9,215 ft<sup>3</sup>/hr</b> oxygen flow at 143 psig.	<b>For Oxygen</b> Up to <b>14,250 ft<sup>3</sup>/hr</b> oxygen flow at 143 psig.	<b>For Oxygen</b> Up to <b>23,750 ft<sup>3</sup>/hr</b> oxygen flow at 143 psig.

**HIGHER FLOW ►**

- ✓ The best protection for your high-flow processes, without the high costs or checking liquid levels.
- ✓ Thermal shut off protection against burn backs and multiple flashbacks.
- ✓ More compact than liquid arrestors.
- ✓ Many different Flow rate options.



## Servomex DF-550E

### Features:

- Non-depleting sensor with 5 year sensor warranty
- Factory calibrated
- Minimum maintenance
- Fast response time and recovery from upset condition
- Suitable for multiple background gases with a single unit
- 200 ppt Lower Detection Limit
- Optional calibration systems

### Applications:

- Quality control
- Leak detection



## Servomex DF-310E

### Features:

- Non-depleting sensor with 5 year sensor warranty
- Factory calibrated
- Fast response time and recovery from upset condition
- Suitable for multiple background gases with a single unit
- Low detection limit and high accuracy

### Applications:

- Nitrogen production
- Argon production
- Hydrogen production
- Truck loading
- Gas bottling





## Formula SF1

### Adhesive Remover

Remove dirt and adhesive from cylinder bodies and cryogenic vessels without harming the cylinder clear coat.

SuperFlash's Formula SF1 Adhesive Remover is powerful enough to remove the toughest adhesive and grime, but is designed not to harm oxygen and compressed gas cylinder bodies.

Follow directions on the label before use.



**One Gallon** (#1110-5520) | **120 Count Wipes** (#1110-5524)



## G-4C

### Oxygen Equipment Cleaner

Safely cleans valves and other surfaces which come into direct contact with oxygen, when used as directed.

SuperFlash's G-4C Oxygen Equipment Cleaner can be used to clean for oxygen service when used in accordance with CGA standard G-4.1-Titled: Cleaning Equipment for Oxygen Service.\*



**One Gallon** (#1101-0026) | **120 Count Wipes** (#1101-0022)

\*Available from SuperFlash, PN: OF-1040 or [www.cganet.com](http://www.cganet.com)



## LTS

### Leak Test Solution

Oxygen-safe leak testing solution is perfect for use with any gas connection.

Using soap and water for leak testing is not only dangerous, but the residue it leaves behind can also corrode or damage the cylinder valve. SuperFlash's Leak Test Solution leaves no residues, and meets MIL Spec PRF-25567E.



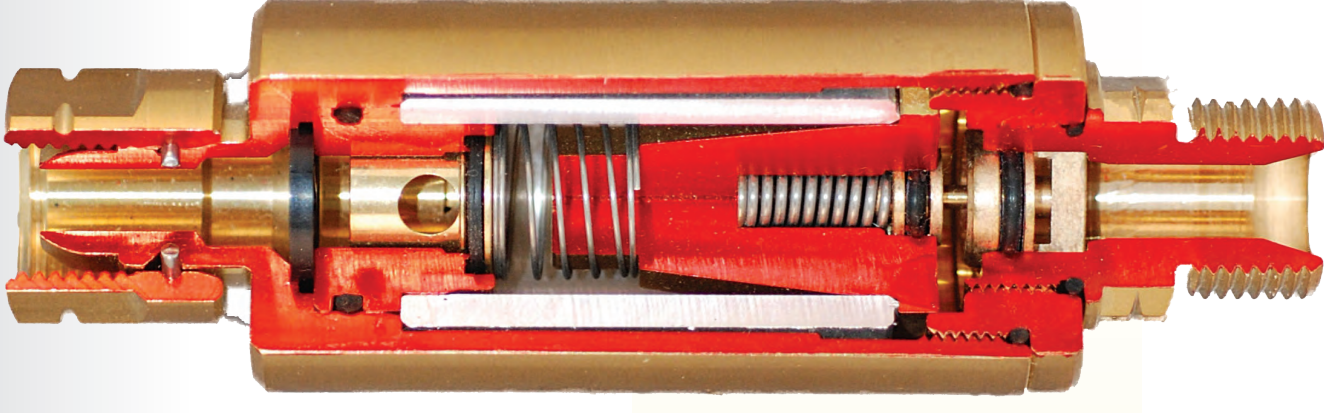
**One Gallon** (#1110-1023) | **8 oz. Container** (#1110-1022)

# SUPERFLASH EDUCATION SERIES:

Brazing or cutting with some alternate fuel gases, such as propane, can require a much higher oxygen flow than a similar operation done with acetylene. It is important to make sure you are always getting enough gas flow to maintain your productivity, efficiency, and safety.

SuperFlash Compressed Gas Equipment offers High Flow Flashback Arrestors for use on both the torch side and the regulator side. These arrestors can give users flow rates that are more than twice as high as a standard flashback arrestor which helps users avoid choking out tips or equipment.

**WHAT SIZE  
Flashback Arrestor  
DO I NEED?**





## STANDARD

## HIGHFLOW

Good for use with tips sizes up to #4

Good for use with tip sizes #4 or larger

Optimized to provide excellent flashback protection, yet remain as small as possible so as not to interfere with user

Larger flame barrier provides higher flow rates and produces much lower pressure drop

3-5 micron stainless steel flame barrier

Great for use with large rosebuds or scrapping torches

100 micron inlet filter

100 micron inlet filter

Check valve to stop reverse flow

Check valve to stop reverse flow

Thermal shut off in regulator mount arrestors

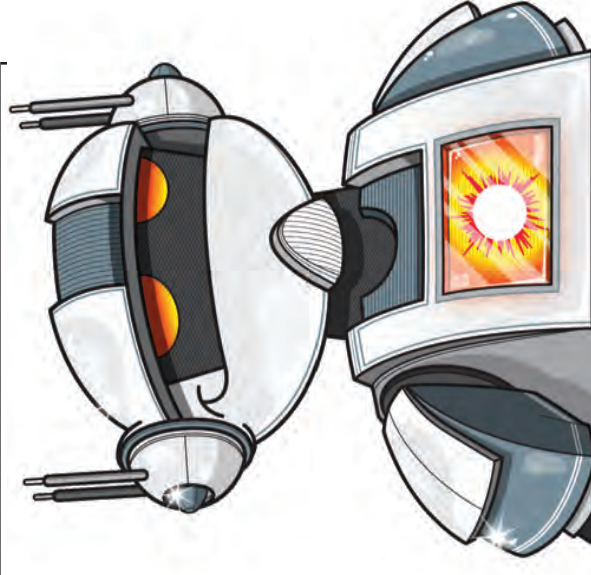
Thermal shut off in regulator mount arrestors

### MODELS:

- Torch: GG
- Regulator: DGN

### MODELS:

- Torch: DG91UA
- Regulator: DG91H



Quick connectors make setting up and taking down equipment faster and easier. They automatically cut off gas flow when disconnected, have all brass construction with durable stainless steel coupling pins and they meet ISO 7289 and EN 561 standards. SuperFlash Industrial Quick Connectors are leaders in the industry.

- ▶ **Stainless steel pin:** Most competitors use a brass pin which can be easily damaged. The stainless steel pin is designed to stand up to everyday use.
- ▶ **Push-to-Pull release:** Meets OSHA requirements for shipyard and construction usage, plus helps to prevent accidental disconnect that can happen with standard QC.
- ▶ **Automatic gas shutoff:** Gas flow stops when pin is disengaged from coupling.
- ▶ **Tested with 6000 makes and breaks:** SuperFlash quick connectors keep going strong—even after we’ve tested them 5000 more times than the competition, proving they can stand up to heavy duty applications.

## Models DKG / DKD

The Model DKG and DKD allows for quick connecting and disconnecting of hose when frequently changing assignments with or without changing tools. Incorporates a push/pull technology that helps meet OSHA specifications for construction, shipyards, etc.

### DKG/D1 for TORCHES and POINT OF USE:

TYPE OF GAS	INLET	OUTLET	QC + PIN	SOCKET ONLY	PIN ONLY
<b>Fuel Gas (LH)</b>	9/16" UNF <sup>1</sup> M	9/16" UNF <sup>1</sup> F	0701-4983	0701-4483	0069-4003
<b>Oxygen (RH)</b>	9/16" UNF <sup>1</sup> M	9/16" UNF <sup>1</sup> F	0701-4992	0701-4492	0069-4008

### DKD/D4 for REGULATORS and POINT OF SUPPLY:

TYPE OF GAS	INLET	OUTLET	QC + PIN	SOCKET ONLY	PIN ONLY
<b>Fuel Gas (LH)</b>	9/16" UNF <sup>1</sup> F	9/16" UNF <sup>1</sup> M	0701-4993	0701-4093	0069-4204
<b>Oxygen (RH)</b>	9/16" UNF <sup>1</sup> F	9/16" UNF <sup>1</sup> M	0701-4999	0701-4099	0069-4214

<sup>1</sup> CGA Class "B" Connection

## Inert Gas

SuperFlash inert gas quick connectors are ideal for quick setup or take down of inert gas lines for your welding process. All of the SuperFlash inert gas quick connectors use a stainless steel pin and double O-ring seal to provide maximum lifespan and have a 'push then pull' connection style, which helps to eliminate accidental disconnections, and automatically stops gas flow when the pin is disengaged from the coupling.

### DKG/D1 INERT GAS REGULATOR TO HOSE:

TYPE OF GAS	INLET	OUTLET	QC + PIN	SOCKET ONLY	PIN ONLY
<b>Inert Gas (RH)</b>	5/8" UNF F	5/8" UNF M Socket	0701-7091	0701-7093	0701-7094

### DKG/D1 INERT GAS MACHINE TO HOSE:

TYPE OF GAS	INLET	OUTLET	QC + PIN	SOCKET ONLY	PIN ONLY
<b>Inert Gas (RH)</b>	5/8" UNF M Nipple	5/8" UNF F	0701-7100	0701-7102	0701-7103



DKG



DKD



DKG  
INERT GAS

# NEW!

## Stainless Steel Flashback Arrestors

### Great for lab use! Won't corrode!

SuperFlash Compressed Gas Equipment has extended its product offering with more flashback arrestors made with Stainless Steel! In addition to our standard high flow stainless steel flashback arrestor (model DG91NSS), we now offer three additional versions to cover a much larger range of flow rates and situations. Now no matter what application you have, we can provide a flashback arrestor made from stainless steel and suitable for use with higher purity gases, and in more demanding environments.

Stainless steel flashback arrestors are designed for oxygen, hydrogen and other flammable gases where all stainless steel type 316 with Viton or other elastomer are desirable. These arrestors are standard with 1/4" NPT connections; however These arrestors are specially adapted and tested in our lab with a wide variety of connections, including Swagelok tube fittings.

### Specifications:

#### ▪ **THREADS**

In accordance with EN 560, ISO 3253 for common connections:

- Fuel Gas: 1/4" NPT
- Oxygen/ Compressed Air: 1/4" NPT

For additional connections please contact SuperFlash:  
(440) 716-9960, toll free at (888) 327-7306, or by emailing [sales@oxyfuelsafety.com](mailto:sales@oxyfuelsafety.com)

#### ▪ **GAS-TYPES**

Acetylene (A), Town Gas (C), Compressed Air (D), Ethylene (E), Hydrogen (H), Natural Gas (Methane) (M), Oxygen (O), Propane (P), MPS Methylacetylen-Propadien-Mixture (Y)

#### ▪ **WORKING PRESSURE**

15 PSIG Acetylene | 50 PSIG Hydrogen | 50 PSIG LPG | 143 PSIG Oxygen

#### ▪ **MAINTENANCE**

An examination is required within a period of at least once a year. According to TRAC 207, 9.36 and BGV D1, § 49. We would be pleased to offer you the PVGD flashback arrestor testing unit. Safety devices may be opened and repaired only by the manufacturer.



### Safety Elements and Features:

- Gas non-return valve NV
- Flame arrestor FA
- Thermal cut-off valve TV
- Dust filter promotes long life

# Adjustable Gas Mixers

The SuperFlash Mini-PGM 2-gas adjustable gas mixer allows users to mix their own gases at almost any ratio needed to fit their process requirements!

This means users are able to customize and use their own desired mixture, without having to purchase pre-mixed gases. Weighing 7.5 lbs and using less than 1 ft<sup>3</sup> of space, the Mini-PGM is one of the most compact mixers available and will provide enough gas for eight (8) welding machines at approximately 40-50 SCFH per machine!

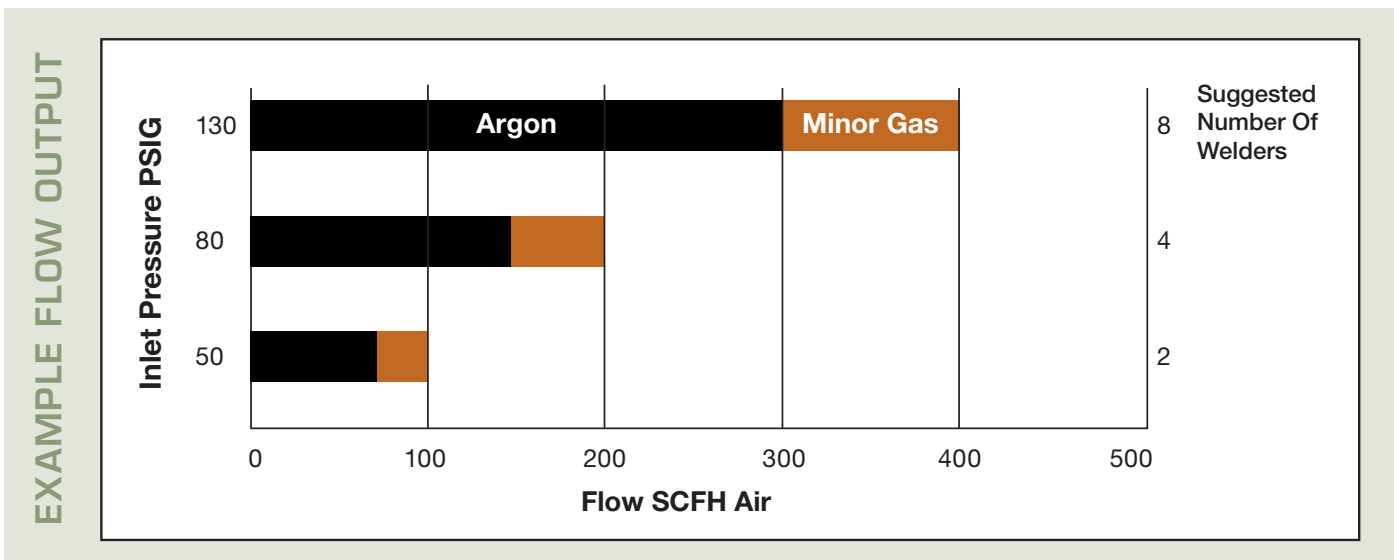
The Mini-PGM is available in a variety of 2-gas combinations including Ar/CO<sub>2</sub>, Ar/He, Ar/O<sub>2</sub>, N/O<sub>2</sub> and several others. We can configure a mixer to use with almost any technical or atmospheric gas – please contact us to request more information on a mixer designed to meet your specific gas needs.

- **No external power source necessary.**
- **Adjusted instantly with one dial.**
- **Low maintenance.**
- **Covered with a one year warranty.**



MINI-PGM model 0801-4410 for Ar/CO<sub>2</sub>

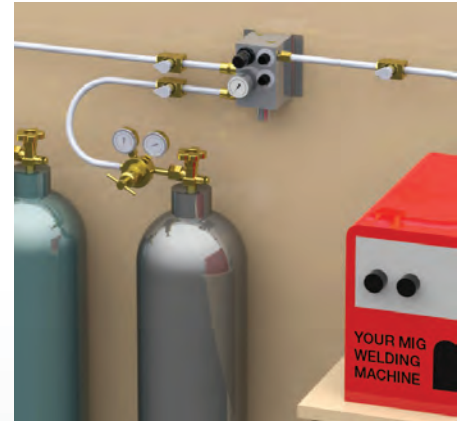
MODEL	PART NO.
Argon/Helium Gas Mixer, 0-100% Helium	0801-4420
Nitrogen/Helium Gas Mixer, 0-100% Helium	0801-4429
Argon/Oxygen Gas Mixer, 0-100% Oxygen	0801-4430
Nitrogen/CO <sub>2</sub> Gas Mixer, 0-100% CO <sub>2</sub>	0801-4435
Compressed Air/CO <sub>2</sub> Gas Mixer, 0-100% CO <sub>2</sub>	0801-4440
Hydrogen/Nitrogen Gas Mixer, 0-100% Hydrogen	0801-4450





**Technical Data:**

Use Location .....Indoors  
 Operating Temperature.....20°F to 100°F (-7°C to 38°C)  
 Storage Temperature.....0°F to 120°F (-18°C to 49°C)  
 Weight .....7.5 lbs  
 Gas Inlet Temperature Range.....4°F to 113°F  
 Inlet Pressure Range .....36 PSIG to 145 PSIG  
 Difference Between Gas Inlet Pressures .....Max 43 PSI  
 Gas Inlet/Outlet Ports.....1/4" NPT (F)



**Example Pressure Settings:**

Gas Inlet Pressure ..... 80 PSIG  
 Operating Pressure..... 58 PSIG (should be at least 22 psi below inlet pressure)  
 Max mixed gas flow at these pressures..... 216 SCFH @ 22 PSIG outlet pressure (mixed gas flow valve at 100%)  
 Min mixed gas flow at these pressures..... 43.2 SCFH @ 22 PSIG outlet pressure (mixed gas flow valve at 20%)

**Make your gas customer more productive ... before your competitor does.**

Cost savings can range from 10 to 15% or more, depending on how gas is purchased — just by mixing on site. A SuperFlash gas mixer can pay for itself in a matter of months, or even quicker when gas is purchased in bulk. Take a look below for some example cost savings.

**Estimated savings based on purchase of 'T' size C-25 vs. purchase of 'T' size Argon and 50 lbs. tank of CO<sub>2</sub>**

Number of Welders	Weekly Usage (ft <sup>3</sup> )	C-25 Cylinders Used Per Week	Pre-mixed Cost	Self-mixed Cost	Weekly Savings	Annual Savings
2	1600	4.2	\$214.74	\$184.80	\$29.94	\$1,556.72
5	4000	10.5	\$536.84	\$462.00	\$74.84	\$3,891.79
8	6400	16.8	\$858.95	\$739.20	\$119.75	\$6,226.86
10	8000	21.1	\$1,073.68	\$924.00	\$149.68	\$7,783.58
15	12000	31.6	\$1,610.53	\$1,386.00	\$224.53	\$11,675.37

**Assumptions:**

- 40 SCFH usage per welder
- 50% usage cycle over 40 hour week
- Cost of Ar = \$13.40/100ft<sup>3</sup>
- Cost of CO<sub>2</sub> = \$.516/lb
- C-25 Tank refill = \$51

## Are you satisfied with your current heating techniques? ... Do you have a heating process that you want to optimize?

SuperFlash Compressed Gas Equipment can help by designing a customized heating solution so that you can focus on your production. Custom heating products give you predictable, reliable and repeatable results for all your heating processes.

Don't waste time and energy using rosebuds to heat large areas or specially shaped surfaces. Whether it is for flame hardening, pre or post weld heating, straightening, or fusing surface materials... call, email, or complete our online Guaranteed Rapid Response Request Form to find out how we can build a heating solution to maximize your productivity and give you dependable and repeatable results today.

All custom heating solutions are built to order using the highest quality materials and production methods, all while conforming to international standards such as ISO and BAM.

Examples of burner applications include:

- Ring burners with or without swivel connections for pipes ranging from 1" to 100" diameter or larger.
- Large sized lane burners for straightening or concrete cleaning.
- Custom shaped multiple rosebud configurations for metal or glass shaping.

Contact us today for more information: [sales@oxyfuelsafety.com](mailto:sales@oxyfuelsafety.com) | 1-888-327-7306



## Test & Rebuild Program

### SuperFlash announces enhanced flashback arrestor test and rebuild program for in-line and manifold flashback arrestors.

Do you have a model DEMAX or SIMAX inline or manifold arrestor? If so, your safety devices need to be checked on a yearly basis. ANSI Z49.1 requires that "... a regular inspection program should be followed as specified in the instructions provided by the manufacturer."

SuperFlash has always offered testing services as well as refurbishment programs for their customers. Now we are expanding your options to ensure that your manifold and inline flashback arrestors are operating at the level to which they were designed.

If your inline or manifold flashback arrestor is no longer flowing up to spec, SuperFlash now offers INSTANT FLASHBACK ARRESTOR REFURBISHMENT. We can send you a replacement arrestor even prior to you sending your unit to us, which means much less down time or waiting to have your equipment returned.

Call us today, **888-327-7306**, to get started with the testing, repair, or our new 'Instant Refurbishment' of your inline or manifold flashback arrestor.




---

ANSI Z49.1, E10.6.7.1 Flashback arrestors can provide a certain measure of protection against the hazards of flashback. To maintain this protection and to ensure that they have not become damaged or inoperative during use, a routine inspection program should be followed as specified during use. Also, a regular inspection program should be followed as specified in the instructions provided by the manufacturer.

---

SuperFlash Compressed Gas Equipment carries a variety of combustion powder thermal spray equipment as well as parts and accessories for this type of equipment. With some of the highest quality and most durable equipment available, SuperFlash can help get you setup to spray for the first time, or provide you with the right repair parts for the SuperFlash, IBEDA, Hühne®, Bohler® or UTP® spray equipment you already own.

## Mini Spray Jet

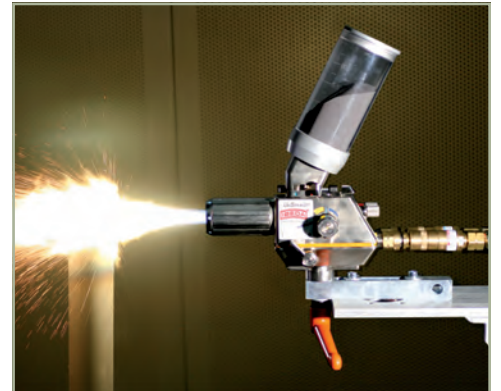
The Mini Spray Jet is designed for universal application where wear and corrosive protection have to be considered. They are suitable for both manual application and application with a manipulator (like robots or linear units). Mini Spray Jet's light weight makes it ideal for mobile and manual applications.



## Uni Spray Jet

Combustion Powder spray torch for use with hot and cold process thermal spray using a variety of powders and substrates. The Uni Spray Jet has all the features of the Mini Spray Jet as well as increased durability and productivity features.

- Integrated powder transport system
- With the integrated gate valve, many types of transport gases can be used
- Overhead position through removable and 180° changeable powder connection
- Just one powder connector with adjustable slider for different capacities
- Lever to turn gas on and off without changing the settings (Uni Spray Jet and Uni Spray Jet-SE)
- Model for connection of one external separate powder feeder (Uni Spray Jet-SE)



## Duraloy & Duraloy Plus

Powder spray torch for thermal spraying with self-fluxing alloys and melting at the same time. Most types of metal can be coated with the Duraloy and the Duraloy Plus torch, provided that the melting point is higher than the working temperature of the alloy. During the operation, the powder particles pass through the flame and onto the surface of the work piece. The bonding is achieved by fusion with the parent metal. In comparison to the Duraloy, the Duraloy Plus torch offers an even more comfortable handling by the integrated quick action shut-off valve. When operation is interrupted, the gas mixture, which was adjusted previously, is maintained. Therefore, it is not necessary to spend any time re-adjusting the mixture when setting up the re-operation.



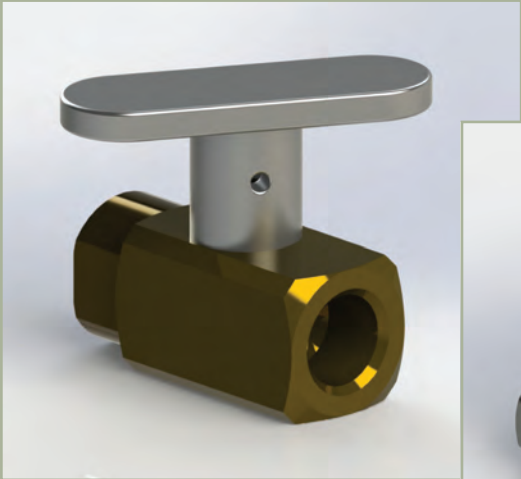


# Custom Engineering

**Need a low unit volume custom safety, heating, valve and / or welding gas control solution for some of your toughest applications?** Contact us to see how we can help you grow your business.

SuperFlash, with more than fifty years of welding gas safety, heating, and gas control equipment experience, can develop custom low unit volume gas control, heating, and safety solutions for your toughest applications. We have state of the art engineering and machining capabilities to design, manufacture, assemble, clean, certify, and test your equipment to ensure proper fit and function, all from our locations in Westlake, Ohio and Neustadt/Wied, Germany.

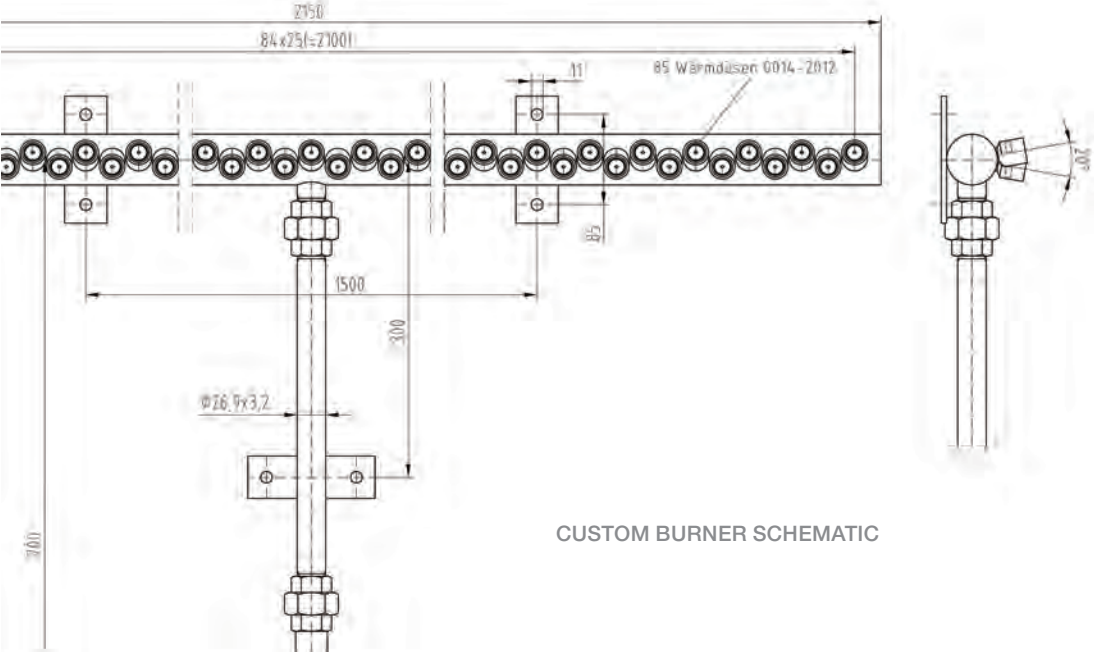
Contact us to get started today: [sales@oxyfuelsafety.com](mailto:sales@oxyfuelsafety.com) | 1-888-327-7306



CUSTOM OXYGEN VALVES



CUSTOM FLASHBACK ARRESTOR



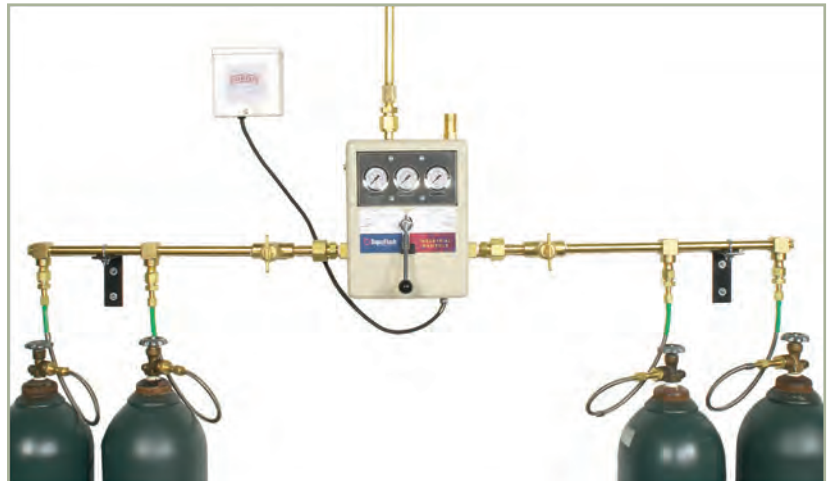
CUSTOM BURNER SCHEMATIC

## Pressure Manifold Changeover

SuperFlash's manifold changeover is simple and easy to use. Prevent down time and the possible problem of running out of gas with this easy to use solution. When the cylinder batch is depleted, the manifold switches over to a reserve bank of cylinders. After replacing the cylinders the operator resets the unit simply by turning the lever.

## For Gas

- Electrical - 115 v. (AC)
- Master shut off valves included
- All systems include stainless braided pigtails with PTFE lined inner core except Helium and Hydrogen systems which have a thermoplastic inner core.
- Acetylene systems include: 300 SCFH flashback arrestor and piping. Stainless steel braided pigtails with individual flashback arrestors and check valves.
- Connects to remote alarm systems. Up to 3 amps 30 v. (DC) or 2 amps 250 v. (AC)
- Manifold outlet - 1/2" NPT
- Relief valve outlet - 3/4" NPT
- 1/2" brass headers



## For Liquid

- 240 Series for use with 235 PSIG relief valve liquid cylinders
- 240HP Series for use with 350 PSIG relief valve liquid cylinders
- Electrical - 115 v.
- Connects to remote alarm systems. Up to 3 amps 30 v. (DC) or 2 amps 250 v. (AC)
- Manifold outlet - 1/2" NPT
- Relief valve outlet - 1/4" NPT



## Simplex Manifold System

The Model SMS simplex manifold system allows for a supply bank of cylinders to be connected together to allow for a larger volume of gas withdrawal. Typical applications with high flow requirements and liquid fuel gases. Operation is as simple as opening the cylinder valves and setting the regulator.

- Maximum inlet pressure 350 PSIG
- Includes adjustable line regulator:  
MS 20-160 PSIG  
Acetylene 0-15 PSIG  
LPG 0-45 PSIG  
MSHF 50-300 PSIG
- Manifold outlet: 1/2" NPT
- 24" or 36" flexible stainless steel pigtails with check valves
- 1/2" brass headers
- Simplex Acetylene systems includes flashback arrestor, pigtails, and check valves
- Available for Acetylene, CO<sub>2</sub>, Nitrous Oxide, Air, Fuel Gases, Hydrogen, Oxygen, Argon/ Nitrogen, Helium and Industrial Air



## Duplex Manifold System

The Model DMS duplex manifold system allows for switching from a supply bank of cylinders to a reserve bank of cylinders instantly. Operation is as simple as opening the appropriate header valve when a bank gets low and replacing the empty bank's cylinders.

- Maximum inlet pressure 3000 PSIG
- Acetylene systems (CGA 510) include dry type flash arrestors on pigtail end
- All systems include Stainless Braided pigtails with PTFE lined inner core except those for Helium and Hydrogen which have a thermoplastic inner core
- Available for Acetylene, CO<sub>2</sub>, Nitrous Oxide, Air, Fuel Gases, Hydrogen, Oxygen, Argon/ Nitrogen, Helium and Industrial Air





28825 Ranney Parkway • Westlake, OH 44145

PRESRT STANDARD  
U.S. POSTAGE  
PAID  
CLEVELAND, OH  
PERMIT NO. 283

**Please forward to your safety  
and compliance officer.**

Your Priority  
Code Is



POINTING YOU TOWARDS THE BEST IN COMPRESSED GAS SAFETY AND CONTROLS

ISSUE 1, 2014

# SOLUTIONS

For Your Gas Safety Concerns

**1-888-327-7306**

**NEW!**

## Servomex OxyDetect

**The only oxygen deficiency monitor with sensors that never need replacing!**

### Features:

- Latest Paracube micro sensor never needs replacing, saving up to \$400 a year
- No loss of reliability means no more false alarms, potentially saving \$10,000 or more a year
- Optional 5-year warranty, including the sensor
- Easy to use digital interface
- Indoor environments 41°F to 113°F (5°C to 45°C)
- One isolated 4-20mA output
- Output range 0-25% O<sub>2</sub>
- Fault alarm via mA jam to 0mA – advanced microprocessor based diagnostics

