

Safety device to U/L 23Y5, EN 730-1, ISO 5175

Model: **GG**

For Torch Side Protection



Either at the flame cutting machine or at a torch this compact design offers installation within the smallest possible space with the added feature of a swivel nut for fast and easy installation.

Safety elements:

- Gas non-return valve NV
- Flame arrestor FA

Dust filter promotes long life

Threads:

In accordance with EN 560, ISO 3253 for common connections

Fuel Gas: UNF 9/16" – 18 LH

Oxygen/ Compressed Air: UNF 9/16" – 18 RH.

For additional connections please contact Superflash at (888) 327-7306.

Gas-Types:

Acetylene (A), Town Gas (C), Compressed Air (D), Ethylene (E), Hydrogen (H), Natural Gas(Methane) (M), Oxygen (O), Propane (P), MPS Methylacetylen-Propadien-Mixture (Y)

Working pressures:

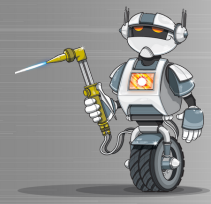
A 15 PSIG / 1.0 bar; H 50 PSIG / 3.5 bar ; CEMPY 72 PSIG / 5.0 bar ; DO 143 PSIG / 10.0 bar

Maintenance:

Annual examination for damage using SuperFlash's PVGD According to TRAC 207, 9.36 and BGV D1, § 49 Safety devices may be opened and repaired by the manufacturer only.

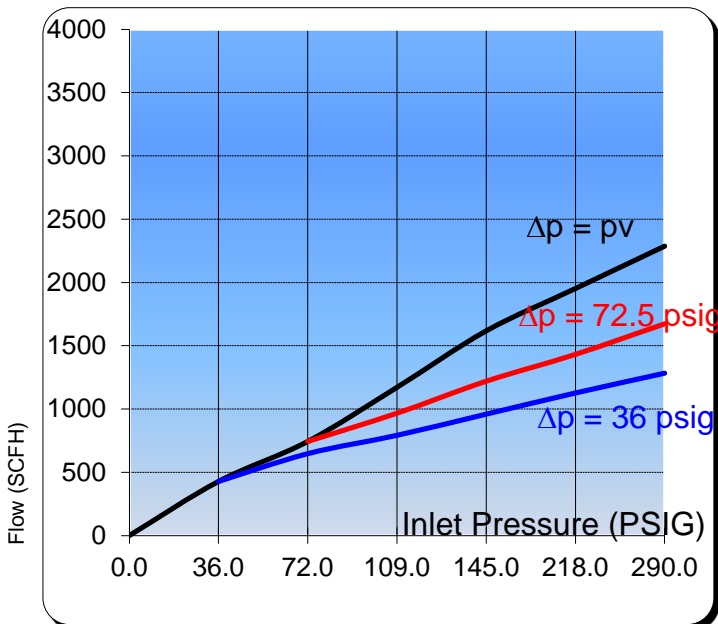
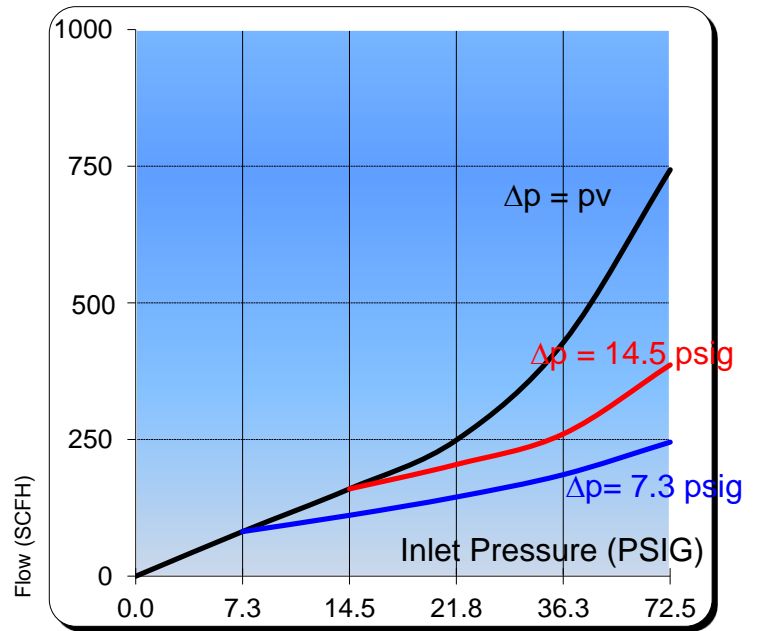
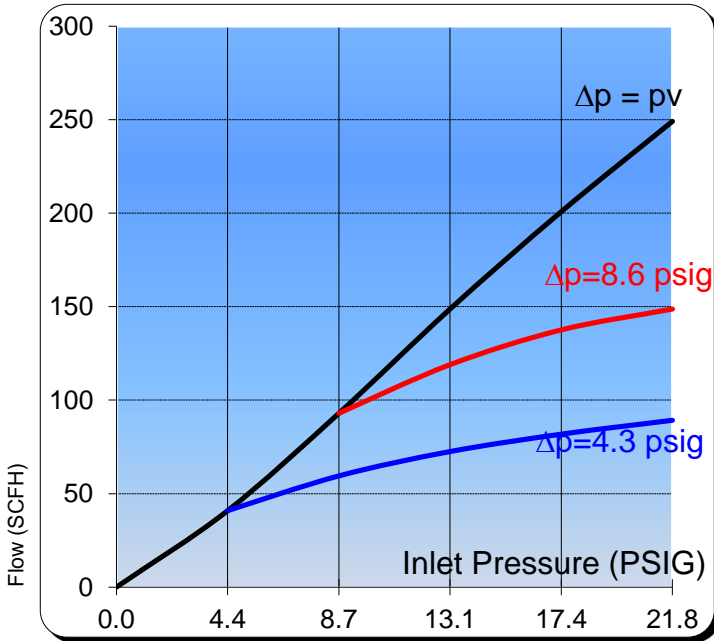
Design:

Other materials and surface finishing on request.



Safety device to U/L 23Y5, EN 730-1, ISO 5175
Model: GG

Flow-Rate Data:



Conversion Factor:

(A) Acetylene C ₂ H ₂ :	x 1.04
(C) Town Gas:	x 1.54
(E) Ethylen	x 1.02
(H) Hydrogen H ₂ :	x 3.75
(M) Methane: CH ₄	x 1.33
(P) Propane C ₃ H ₈ :	x 0.80
(M) Natural Gas	x 1.25
(Y) MAPP-Gas C ₃ H ₄	x 0.81
(O) Oxygen O ₂ :	x 0.95

1 bar = 14.28 psi
1 bar = 100 kPa
1 m ³ = 1.31 cu.yd