

Safety device to U/L 23Y5, EN 730-1, ISO 5175 Model: **DS-2000**

For Protection of Cylinder-Regulators and Tapping Points.



Highlights:

- Gas non-return valve NV
- Flame arrestor FA
- Thermal cut-off valve TV
- Pressure sensitive gas cut-off system PV

Dust filter promotes long life

Threads:

In accordance with EN 560, ISO 3253 for common connections

Fuel Gas: G3/8"LH, M16X1.5LH, UNF9/16"-18LH, UNF5/8"-18LH, 1/4"-NPT

Oxygen/ Compressed Air: G1/4"RH, G3/8"RH, M16X1.5RH, UNF9/16"-18RH, UNF5/8"-18RH, 1/4"-NPT

For additional connections please contact SuperFlash/toll free @ 888/327-7306.

Gas-Types:

Acetylene (A), Town Gas (C), Compressed Air (D), Ethylene (E), Hydrogen (H), Natural Gas (Methane) (M), Oxygen (O), Propane (P), MPS Methylacetylen- Propadien- Mixture (Y)

Working pressure:

A 1 5 PSIG; H 50 PSIG; CBMPY 50 PSIG; DO 143 PSIG

Maintenance:

An examination is required within a period of at least once a year.

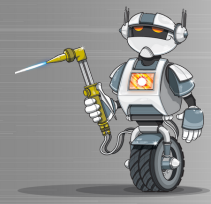
According to TRAC 207, 9.36 and BGV D1, § 49

We would be pleased to offer you the PVGD flashback arrestor testing unit.

Safety devices may be opened and repaired only by the manufacturer.

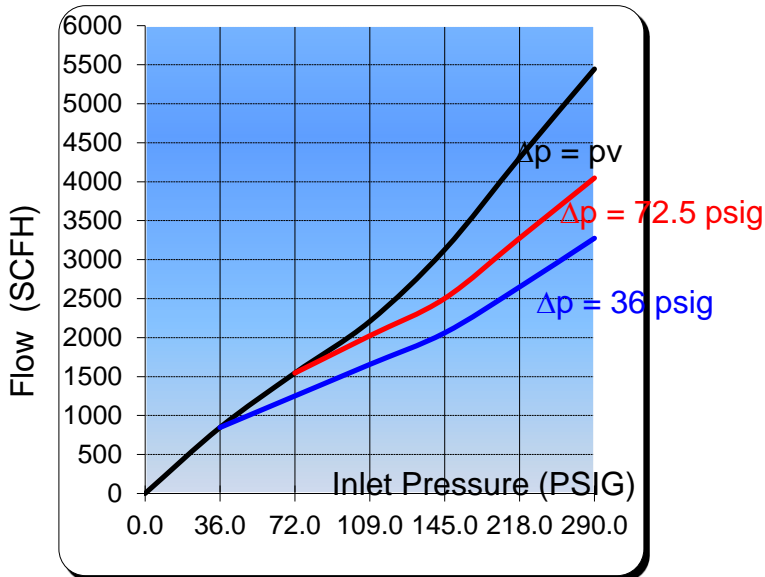
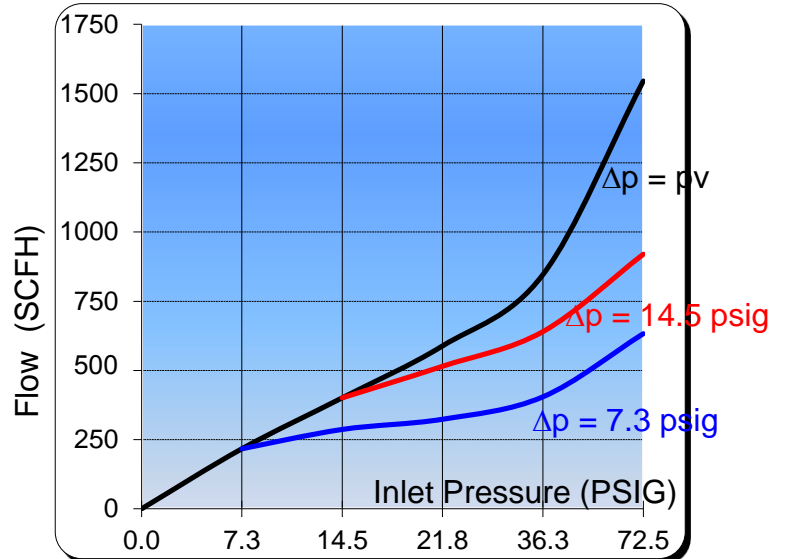
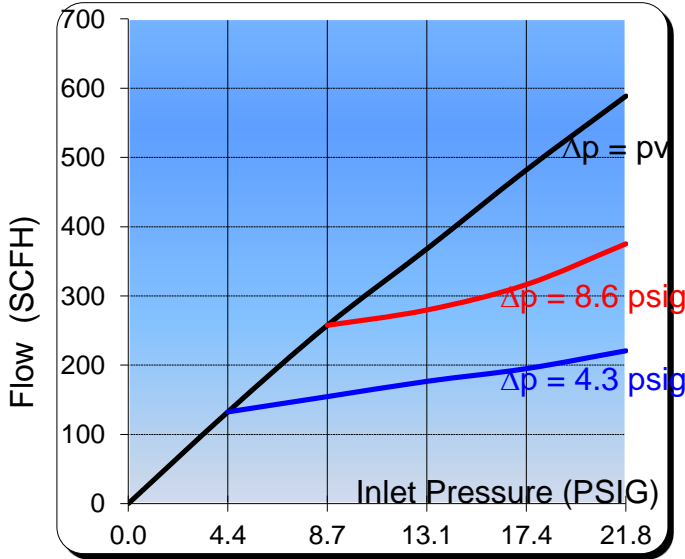
Design:

Other materials and surface finishing on request.



Safety device to U/L 23Y5, EN 730-1, ISO 5175 Model: DS-2000

Flow-Rate Dates:



Conversion Factor:

(A) Acetylene C_2H_2 :	x 1.04
(C) Town Gas:	x 1.54
(E) Ethylen	x 1.02
(H) Hydrogen H_2 :	x 3.75
(M) Methane: CH_4	x 1.33
(P) Propane C_3H_8 :	x 0.80
(M) Natural Gas	x 1.25
(Y) MAPP-Gas C_3H_4	x 0.81
(O) Oxygen: O_2	x 0.95

1 bar = 14.28 psi

1 bar = 100 kPa

1 m³ = 1.31 cu.yd