

## Safety device to U/L 23Y5, EN 730-1, ISO 5175

Model: **DGN**

For Protection of Cylinder-Regulators and Tapping Points.



The standard safety device for industries and small enterprises. The type DGN covers the most applications and can be used on tapping points as well as on single cylinders.

### Safety elements:

- Gas non-return valve
- Flame arrestor
- Thermal cut-off valve

NV  
FA  
TV

**Dust filter promotes long life**

### Threads:

In accordance with EN 560, ISO 3253 for common connections

Fuel Gas: G3/8" LH, M16X1.5 LH, UNF9/16"-18 LH, UNF5/8"-18 LH, 1/4"-NPT

Oxygen/ Compressed Air: G1/4" RH, G3/8" RH, M16X1.5 RH, UNF9/16"-18 RH, UNF5/8"-18 RH, 1/4"-NPT

For additional connection sizes please contact SuperFlash at (440) 716-9960, toll free at 888/327-7306, or by email at [sales@superflashcg.com](mailto:sales@superflashcg.com)

### Gas-Types:

Acetylene (A), Town Gas (C), Compressed Air (D), Ethylene (E), Hydrogen (H), Natural Gas (Methane) (M), Oxygen (O), Propane (P), MPS Methylacetylen-Propadien-Mixture (Y)

### Working pressure:

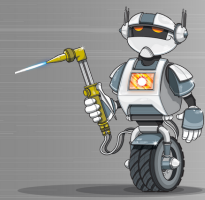
A 15 PSIG / 1.0 bar; H 50 PSIG / 3.5 bar; CEMPY 72 PSIG / 5.0 bar; DO 143 PSIG / 10.0 bar

### Maintenance:

Annual examination for damage using SuperFlash's PVGD According to TRAC 207, 9.36 and BGV D1, § 49  
Safety devices may be opened and repaired by the manufacturer only.

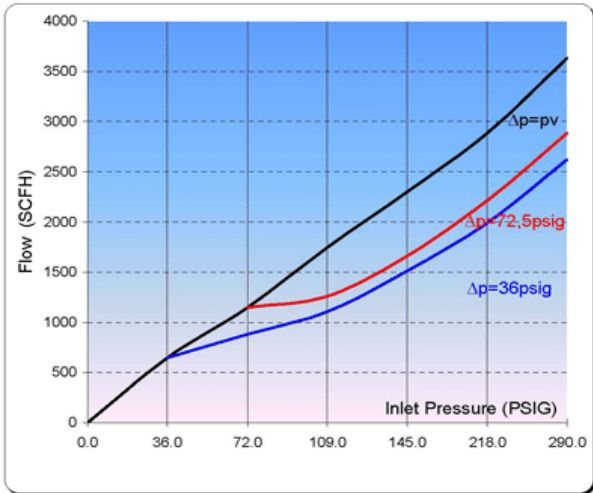
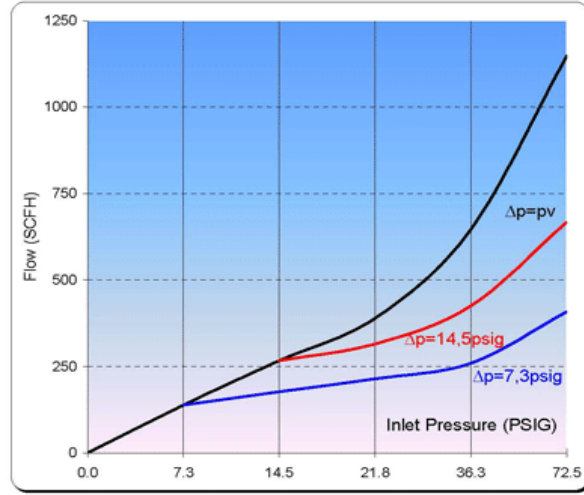
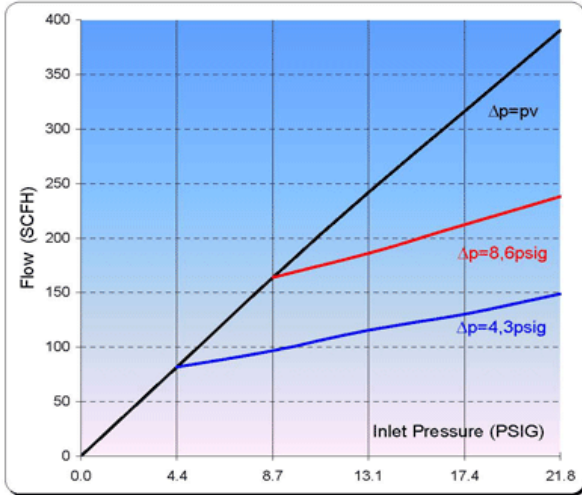
### Design:

Other materials and surface finishing on request.



**Safety device to U/L 23Y5, EN 730-1, ISO 5175**  
**Model: DGN**

**Flow-Rate Data:**



**Conversion Factor:**

( A ) Acetylene C <sub>2</sub> H <sub>2</sub> :	x 1.04
( C ) Town Gas:	x 1.54
( E ) Ethylene:	x 1.02
( H ) Hydrogen H <sub>2</sub> :	x 3.75
( M ) Methane: CH <sub>4</sub>	x 1.33
( P ) Propane C <sub>3</sub> H <sub>8</sub> :	x 0.80
( M ) Natural Gas	x 1.25
( Y ) MAPP-Gas C <sub>3</sub> H <sub>4</sub>	x 0.81
( O ) Oxygen O <sub>2</sub> :	x 0.95

1 bar = 14.28 psi

1 bar = 100 kPa

1 m<sup>3</sup> = 1.31 cu.yd