

Safety device to UL 23Y5, EN 730-1, ISO 5175

Model: **DG91UA**

For Torch Side and Point of Use Protection



Always there where high flow rates are needed DG91UA with its offset connections can be installed even in places with little space.

Safety elements

- Gas non-return valve
- Flame arrestor

NV
FA

Dust filter promotes long life

Threads:

In accordance with EN 560, ISO 3253 as far as country specified connections

Fuel Gas: UNF 9/16", UNF 7/8", UNF 5/8", 1/4"-NPT, G3/8"LH, M16X1.5LH

Oxygen/ Compressed Air: UNF9/16", UNF 7/8", UNF 5/8", 1/4"-NPT, G1/4"RH, G3/8"RH, M16X1.5RH

For additional connection sizes please contact Superflash at (440) 716-9960, toll free at 888/327-7306, or by email at sales@superflashcg.com

Gas-Types:

Acetylene (A), Town Gas (C), Compressed Air (D), Ethylene (E), Hydrogen (H), Natural Gas(Methane) (M), Oxygen (O), Propane (P), MPS Methylacetylen-Propadien-Mixture (Y)

Working pressure:

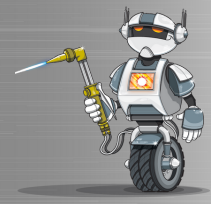
A 15 PSIG; H 50 PSIG; CEMPY 50 PSIG; DO 143 PSIG

Maintenance:

Annual examination for damage using SuperFlash's PVGD According to TRAC 207, 9.36 and BGV D1, § 49 Safety devices may be opened and repaired by the manufacturer only.

Design:

Other materials and surface finishing on request.

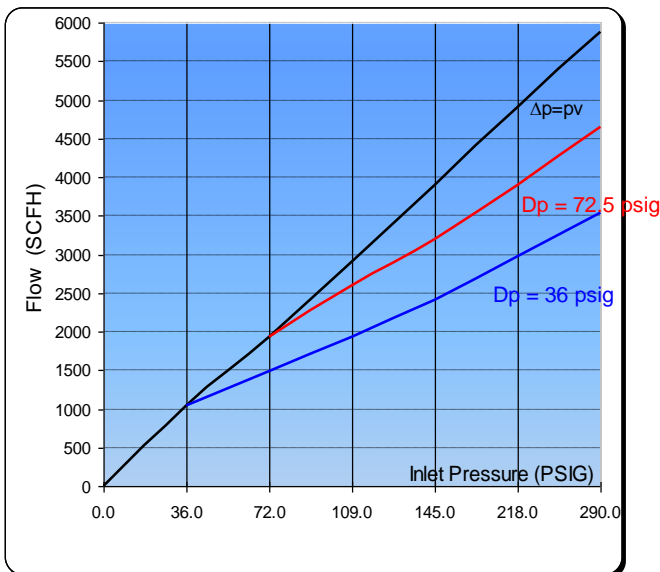
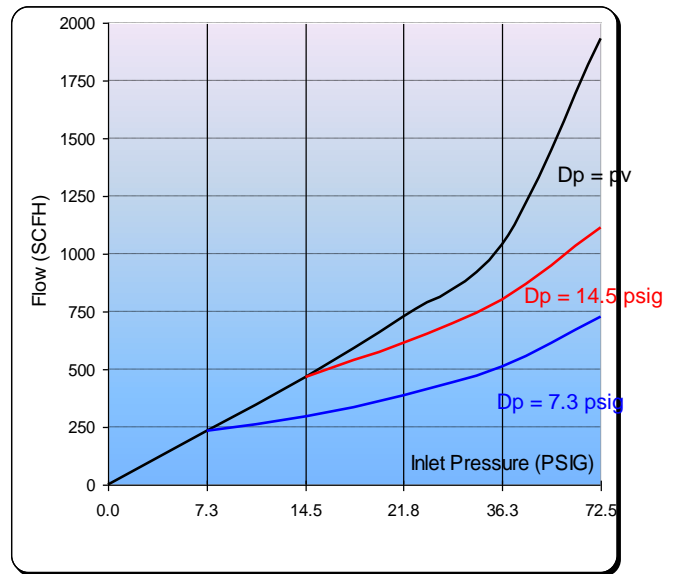
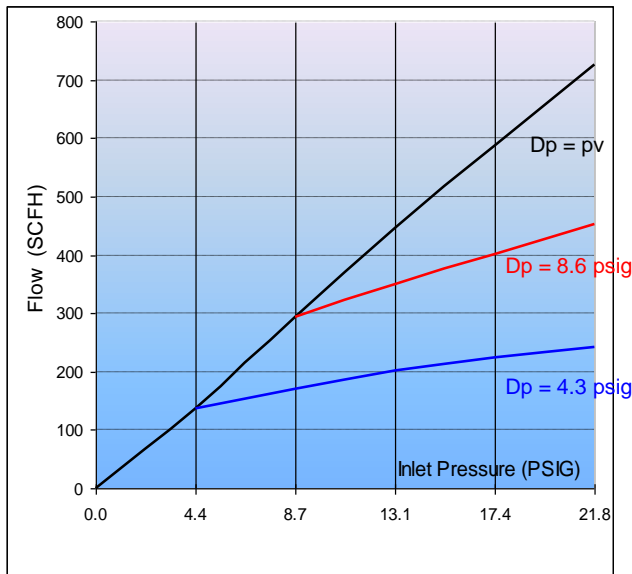


Safety device to UL 23Y5, EN 730-1, ISO 5175

Model: **DG91UA**

For protection of Cylinder-Regulators and Tapping Points

Flow-Rate Data:



Conversion Factor:

(A) Acetylene C ₂ H ₂ :	x 1.04
(C) Town Gas:	x 1.54
(E) Ethylen	x 1.02
(H) Hydrogen H ₂ :	x 3.75
(M) Methane: CH ₄	x 1.33
(P) Propane C ₃ H ₈ :	x 0.80
(M) Natural Gas	x 1.25
(Y) MAPP-Gas C ₃ H ₄	x 0.81
(O) Oxygen O ₂ :	x 0.95

1 bar = 14.28 psi

1 bar = 100 kPa

1 m³ = 1.31 cu.yd