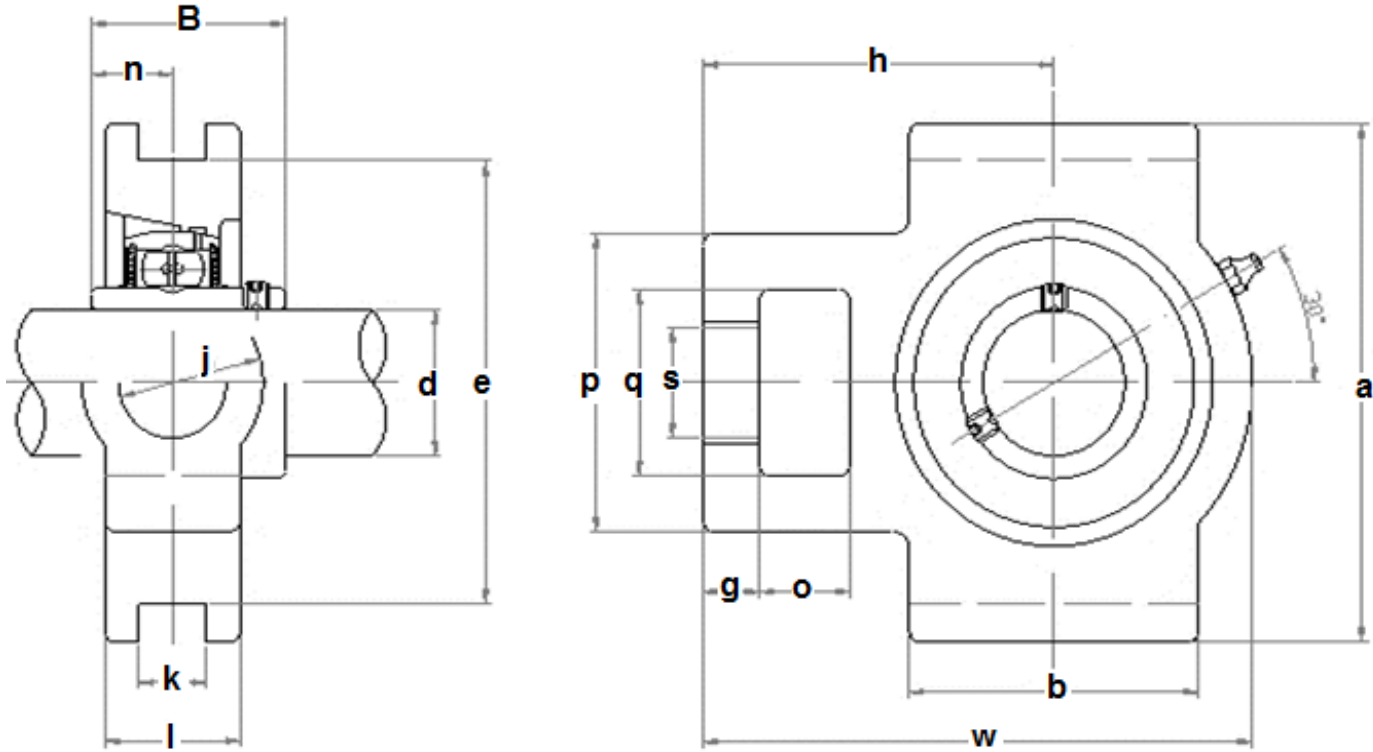


# HMS INDUSTRIES

## TAKE-UP UNIT - WIDE SLOT - SET SCREW TYPE

UCST200-SERIES (SS- prefix represents a stainless steel unit)



HMS Unit No.	Dimensions <sup>mm</sup> / <sub>in.</sub>																Bearings No.	Housing No.	Weight (kg)
	d	o	g	p	q	s	b	k	e	a	w	j	l	h	B	n			
UCST201	12	16	10	51	32	19	51	13.5	76	89	94	32	24	60	31	12.7	UC201 UC201-8	ST204	0.80
UCST201-8	1/2	5/8	25/64	2-1/64	1-1/4	3/4	2-1/64	17/32	2-63/64	3-1/2	3-11/16	1-1/4	15/16	2-13/32	1.2205	0.500			0.79
UCST202	15																UC202 UC202-9 UC202-10	ST204	0.79
UCST202-9	9/16	16	10	51	32	19	51	13.5	76	89	94	32	24	60	31	12.7			
UCST202-10	5/8	5/8	25/64	2-1/64	1-1/4	3/4	2-1/64	17/32	2-63/64	3-1/2	3-11/16	1-1/4	15/16	2-13/32	1.2205	0.500			

UCST203	17	16	10	51	32	19	51	13.5	76	89	94	32	24	60	31	12.7	UC203	ST204	0.78
UCST203-11	11/16	5/8	25/64	2-1/64	1-1/4	3/4	2-1/64	17/32	2-63/64	3-1/2	3-11/16	1-1/4	15/16	2-13/32	1.2205	0.500	UC203-11		0.77
UCST204	20	16	10	51	32	19	51	13.5	76	89	94	32	24	60	31	12.7	UC204	ST204	0.76
UCST204-12	3/4	5/8	25/64	2-1/64	1-1/4	3/4	2-1/64	17/32	2-63/64	3-1/2	3-11/16	1-1/4	15/16	2-13/32	1.2205	0.500	UC204-12		0.76
UCST205	25																UC205	ST205	0.81
UCST205-13	13/16																UC205-13		0.85
UCST205-14	7/8	16	10	51	32	22	51	13.5	76	89	97	32	24	62	34.1	14.3	UC205-14		0.84
UCST205-15	15/16	5/8	25/64	2-1/64	1-1/4	55/64	2-1/64	17/32	2-63/64	3-1/2	3-13/16	1-1/4	15/16	2-7/16	1.3425	0.563	UC205-15		0.82
UCST205-16	1																UC205-16		0.81
UCST206	30																UC206	ST206	1.22
UCST206-17	1-1/16																UC206-17		1.23
UCST206-18	1-1/8	16	10	56	37	22	57	13.5	89	102	113	37	24	70	38.1	15.9	UC206-18		1.24
UCST206-19	1-3/16	5/8	25/64	2-7/32	1-29/64	55/64	2-1/4	17/32	3-1/2	4-1/64	4-29/64	1-29/64	15/16	2-3/4	1.500	0.626	UC206-19		1.22
UCST206-20	1-1/4																UC206-20		1.21
UCST207	35																UC207	ST207	1.44
UCST207-20	1-1/4																UC207-20		1.50
UCST207-21	1-5/16	16	13	64	37	22	64	13.5	89	102	129	37	30	78	42.9	17.5	UC207-21		1.46
UCST207-22	1-3/8	5/8	33/64	2-33/64	1-29/64	55/64	2-33/64	17/32	3-1/2	4-1/64	5-5/64	1-29/64	1-3/16	3-5/64	1.6890	0.689	UC207-22		1.44
UCST207-23	1-7/16																UC207-23		1.41
UCST208	40																UC208	ST208	2.40
UCST208-24	1-1/2	19	16	83	49	29	83	17.5	102	114	144	49	33	89	49.2	19	UC208-24		2.44
UCST208-25	1-9/16	3/4	5/8	3-17/64	1-15/16	1-9/64	3-17/64	11/16	4-1/64	4-31/64	5-43/64	1-15/16	1-19/64	3-1/2	1.9370	0.748	UC208-25		2.41
UCST209	45																UC209	ST209	2.36
UCST209-26	1-5/8	19	16	83	49	29	83	17.5	102	117	144	49	35	87	49.2	19	UC209-26		2.46
UCST209-27	1-11/16	3/4	5/8	3-17/64	1-15/16	1-9/64	3-17/64	11/16	4-1/64	4-39/64	5-43/64	1-15/16	1-3/8	3-27/64	1.9370	0.748	UC209-27		2.42
UCST209-28	1-3/4																UC209-28		2.38
UCST210	50																UC210	ST210	2.43
UCST210-29	1-13/16																UC210-29		2.55
UCST210-30	1-7/8	19	16	83	49	29	83	17.5	102	117	149	49	35	90	51.6	19	UC210-30		2.50
UCST210-31	1-15/16	3/4	5/8	3-17/64	1-15/16	1-9/64	3-17/64	11/16	4-1/64	4-39/64	5-55/64	1-15/16	1-3/8	3-35/64	2.0315	0.748	UC210-31		2.45
UCST210-32	2																UC210-32		2.41
UCST211	55																UC211	ST211	4.11
UCST211-32	2																UC211-32		4.26
UCST211-33	2-1/16	25	19	102	64	35	95	27	130	146	171	64	41	106	55.6	22.2	UC211-33		4.20
UCST211-34	2-1/8	63/64	3/4	4-1/64	2-1/32	1-3/8	3-3/4	1-1/16	5-1/8	5-3/4	6-47/64	2-33/64	1-5/8	4-11/64	2.1890	0.874	UC211-34		4.15
UCST211-35	2-3/16																UC211-35		4.09

UCST212	60																	UC212		4.97
UCST212-36	2-1/4																	UC212-36		5.1
UCST212-37	2-5/16	32	19	102	64	35	102	27	130	146	194	64	46	119	65.1	25.4	UC212-37	ST212	5.02	
UCST212-38	2-3/8	1-17/64	3/4	4-1/64	2-15/16	1-3/8	4-1/64	1-1/16	5-1/8	5-3/4	7-41/64	2-33/64	1-13/16	4-11/16	2.5630	1.000	UC212-38		4.95	
UCST212-39	2-7/16																UC212-39		4.88	
UCST213	65																	UC213		6.65
UCST213-40	2-1/2	32	21	111	70	41	121	27	151	167	224	70	51	137	65.1	25.4	UC213-40	ST213	6.74	
UCST213-41	2-9/16	1-17/64	53/64	4-3/8	2-3/4	1-39/64	4-49/64	1-1/16	5-15/16	6-37/64	8-13/16	2-3/4	2	5-25/64	2.5630	1.000	UC213-41		6.65	
UCST214	45																	UC209		2.36
UCST214-42	1-5/8	32	21	111	70	41	121	27	151	167	224	70	46	137	74.6	30.2	UC209-26		2.46	
UCST214-43	1-11/16	1-17/64	53/64	4-3/8	2-3/4	1-39/64	4-49/64	1-1/16	5-15/16	6-37/64	8-13/16	2-3/4	1-13/16	5-25/64	2.937	1.189	UC209-27	ST209	2.42	
UCST214-44	1-3/4																UC209-28		2.38	
UCST215	75																	UC212		4.97
UCST215-45	2-13/16																	UC212-36		5.1
UCST215-46	2-7/8	32	21	111	70	41	121	27	151	167	232	70	48	140	77.8	33.3	UC212-37	ST212	5.02	
UCST215-47	2-15/16	1-17/64	53/64	4-3/8	2-3/4	1-39/64	4-49/64	1-1/16	5-15/16	6-37/64	9-1/8	2-3/4	1-57/64	5-33/64	3.063	1.311	UC212-38		4.95	
UCST215-48	3																UC212-39		4.88	